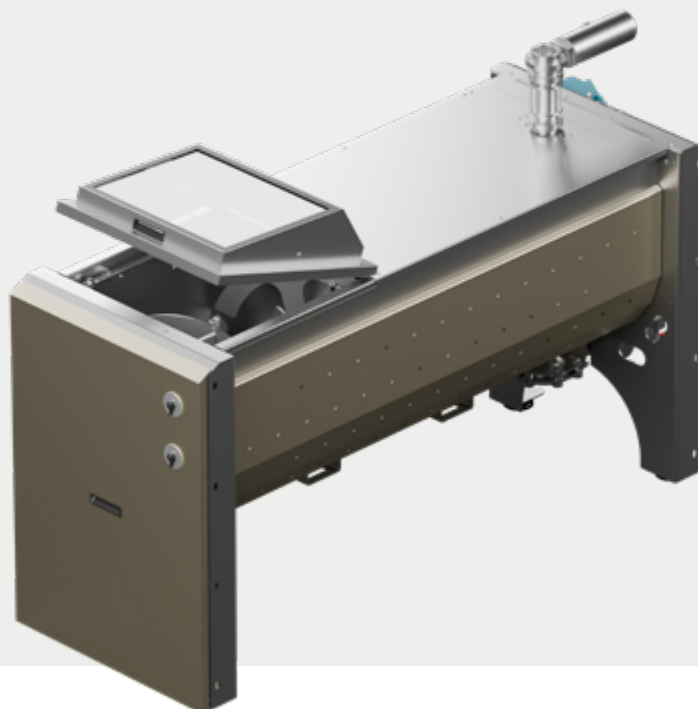




# BASIC PLUS



The Basic Plus malaxer offers all the essential functions for the malaxing process while maintaining a straightforward and accessible design. An upgrade to the Basic model, it incorporates enhanced features that simplify loading and unloading operations, ensuring a smoother and more efficient workflow for operators.



## → FEATURES

- Electric gear motor
- Pneumatic butterfly valve with manual switch for seamless loading and unloading
- Panoramic anti-fog glass with manual opening for easy visibility and control
- Energy-efficient LED lighting system
- Precision temperature sensors
- Level sensor for optimized operations
- Manual quick rinse system for convenient cleaning
- Individual hot water circulator for precise temperature control in each tank

## → TECHNICAL DATA

<b>Capacity (liters)</b>	550   750   950   1150	1500   2000   2500
<b>Electric motor (kw)</b>	1.5	2.2
<b>Material</b>	AISI 304	AISI 304
<b>Model</b>	GR-B	GR-25
<b>Width (mm)</b>	850	1190
<b>Length (mm)</b>	3020   3520	2660   3740   3800
<b>Height (mm)</b>	1200	1780
<b>Weight (kg)</b>	700	1000
<b>Voltage (Vac)</b>	400	400
<b>Frequency (Hz)</b>	50	50
<b>Power Supply Line</b>	3F+T	3F+T